



Our Vision

Leaders in Serving

Our Mission

The ministry of Landis Homes is to serve aging adults and their families by honoring and enriching their lives in a community of Christ-like love.

Our Guiding Values

We commit to these values as we honor God in our service to others:

Joy - Nurturing an atmosphere which is positive, hopeful and thankful, while delighting in serving others, fulfilling responsibilities and celebrating life.

Compassion - Demonstrating Christ-like love and concern in our relationships, serving one another with grace, humility, gentleness and sensitivity in a manner which respects diversity and honors the dignity and worth of everyone.

Integrity - Committing ourselves to be honest, sincere, trustworthy and accountable in relationships, communication and decision-making, with a respect for confidentiality.

Stewardship - Devoting ourselves to faithful and responsible use of resources entrusted to our care, upholding high standards of performance and quality, striving for excellence and serving beyond expectations.

Community - Relating with a spirit which is characterized by cooperation, teamwork, encouragement and mutual respect, valuing each person, affirming gifts and abilities, and seeking improvement through learning, creativity and openness to change.

Frequently Asked Questions



What Qualifications Must I have to Move into Landis Homes?

To qualify, prospective residents (or at least one member of a couple) must be at least 65 years old. A surcharge is added to the Advance Fee for each year the younger person is under age 65. Exceptions may be made for younger individuals needing short-term skilled nursing. Acceptance for residency is contingent upon financial ability as well as meeting the essential requirements of tenancy with or without assistance. Prior to residency, more detailed medical information and updated financial information is required.

What Level of Financial Resources are Required?

Prospective residents must have the ability to pay the Advance Fee, plus show the resources to cover several years of future healthcare. Long Term Care insurance can be an important asset in paying for future care.

Why is there an Advance Fee?

The Advance Fee is an entrance fee providing a lifetime right to the cottage or apartment as long as the resident is able to meet the essential requirements of tenancy. Landis Homes residents are given priority for admission to Personal Care or Healthcare.

Do I get Any of My Advance Fee Returned?

All Advance Fees have a refund plan. Ten percent of the Advance Fee is non-refundable and the remaining 90% is amortized at 1.25% per month for 80 months. Guaranteed Refund Options are also available.

How Can I Get More Information About Landis Homes?

Prospective residents are encouraged to visit Landis Homes by calling the Residency Planning Office and scheduling a time to learn more about the choices offered. Additional information and appointments can be obtained by calling the office at (717) 581-3935 or by e-mail at residencyplanning@landishomes.org or by the web at www.landishomes.org.



Cottages

Cottages offer residential living without the responsibility of home ownership. They come in many styles and may include one or two bedrooms and have a variety of amenities and appliances and may include a garage. All cottages on the South Campus include one- or two-car garages, two bedrooms and two full baths.

Apartments

Apartments offer the independence of cottages with the added convenience of indoor access to services. Styles include: studio, one-bedroom and two-bedroom and may include a patio or balcony.

Hybrid Homes

Hybrid Homes provide residents with a new housing option that combines the best of cottage and apartment living. Features include garage parking, indoor access to the common and service areas, and opportunities for social connections. The design incorporates sustainable building materials and practices as well as renewable energy sources.

Suites

Standard and Large Suites are offered for persons who want the privacy and independence of their own space. Suites are located within easy indoor access to many community areas. Suites also include all meals, housekeeping and laundry, and a Medical Alert System.

FEATURES INCLUDED IN RESIDENTIAL LIVING

- Utilities, including cable TV service (telephone and internet services not included)
- Real Estate Taxes
- Maintenance of Building & Appliances
- Grounds Maintenance
- Scheduled Shopping Trips
- Pastoral Care
- Social & Recreational Activities
- 24-Hour Emergency Response
- Priority Access to Healthcare & Personal Care



Personal Care provides licensed personal care for those who want to live as independently as possible but may require assistance. This assistance might include supervision or help with personal hygiene, daily activities and medications. Both single and double occupancy rooms are available.

Several levels of Personal Care are available, priced according to degree of assistance with activities of daily living.

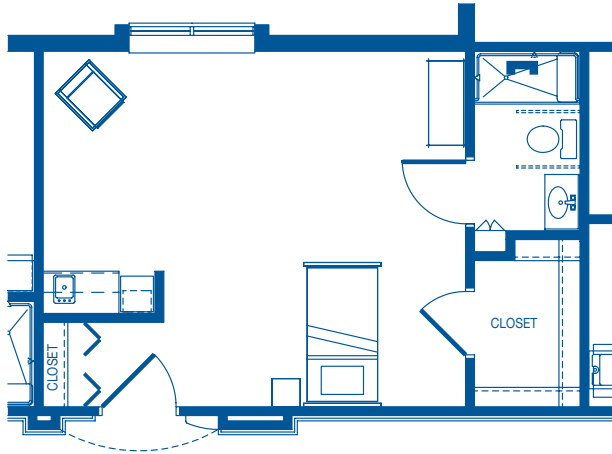
Personal Care for persons with memory loss is offered in Heritage Memory Support.

FEATURES INCLUDED IN THE DAILY FEE

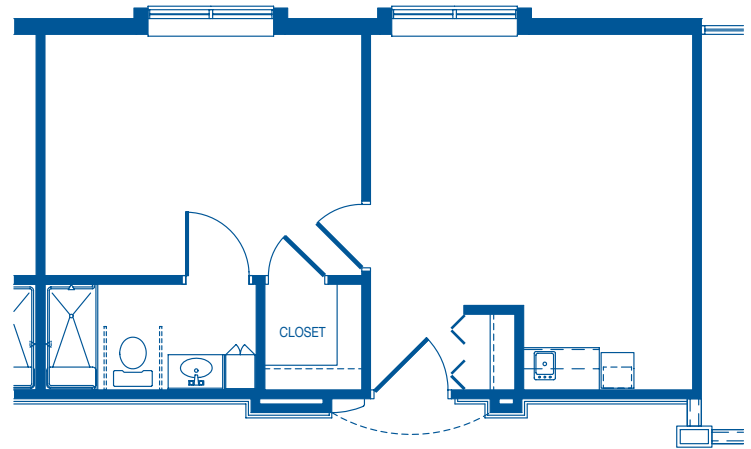
- Standard, large or one-bedroom residences
- All Meals
- Housekeeping, Laundry & Maintenance services
- Utilities*, including telephone and cable TV service
- Assistance with activities of daily living, as needed
- Scheduled Shopping Trips
- Pastoral Care
- Social & Recreational Activities
- Priority Access to Healthcare

**Internet connection not included.*

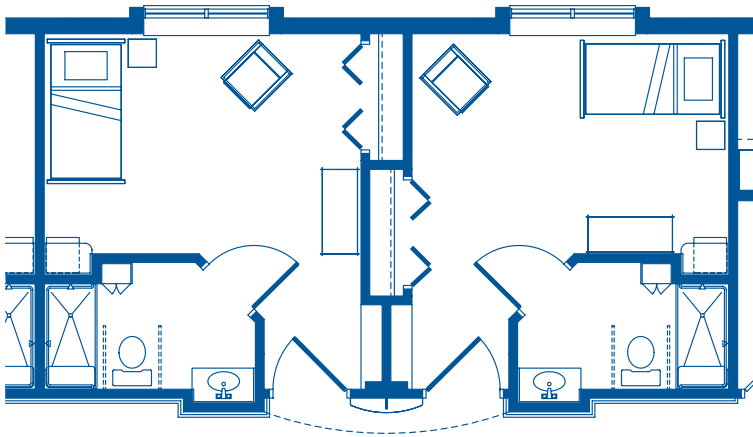
(Floor plans on back)



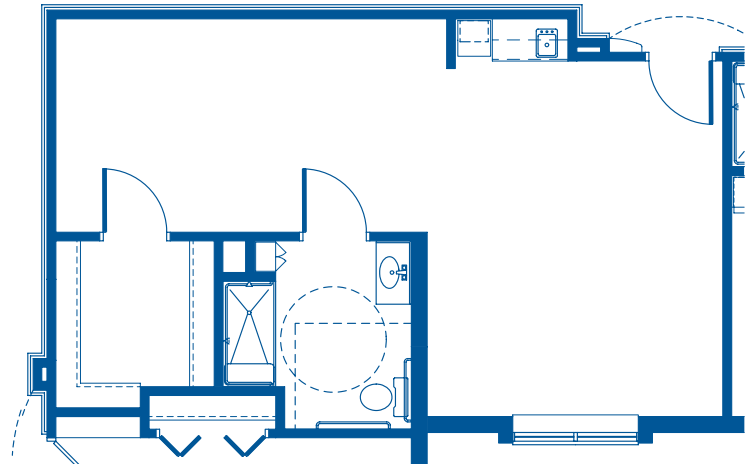
LARGE ROOM



ONE BEDROOM APARTMENT



PAIR OF STANDARD ROOMS



STUDIO APARTMENT



Step 1

Prospective residents and their family are encouraged to visit Landis Homes for a tour of the desired accommodations. The Residency Planning staff will discuss the services and programs available at Landis Homes as well as the fees.

Appointments may be made by calling the office at (717) 581-3935 or by e-mail at residencyplanning@landishomes.org.

Step 2

Upon receipt of the application, Directors of Residency Planning and Finance will review the information; a letter will be sent confirming the application has been received and for which accommodations the applicant qualifies. Qualifications include the ability to pay for several years of future healthcare and meet the essential requirements of tenancy.

If the application is approved, the applicant's name will be placed on the prospect list.

Step 3

When an accommodation becomes available, the prospective resident (or family) will be contacted and arrangements made to determine that the applicant continues to qualify financially and is able to meet the essential requirements of tenancy. Upon seeing the accommodation and accepting it, a Reservation Request form is signed.

An Admission packet will be given which includes all the information that is needed prior to moving. When the information is collected, an appointment is made with Residency Planning to return it and ensure everything is completed.

“The policy of Landis Homes Retirement Community is to admit and provide care in our facilities without regard to race, color, sex, ancestry, national origin, religious creed, handicap, or disability in accordance with applicable federal and state law. However, if the applicants for admission are in excess of the facilities available, qualified applicants are placed on a waiting list. The administration may assign priority on the prospect list to members of the Mennonite Church and as such, assignment is made without regard to race, color, sex, ancestry, national origin, handicap or disability.”



Conveniences

- General Store/Gift Shop/Pharmacy
- Bank (Full service including safe deposit boxes)
- Scheduled Transportation to Shopping Areas
- On-Campus Shuttle Service
- Health Suite
- Postal Services
- Lounges/Meeting Rooms/Dining Rooms
- Guest Cottages
- Libraries & Computer Centers
- Support Groups including Memory Loss, Vision Loss, Grief Support, Separation, Parkinson's Disease
- Walking Paths
- Pavilion
- Closed Circuit Television Channel

Activities

- Chapels/Worship Services/Bible Study
- Indoor Pool & Spa
- Fitness Centers & Exercise Classes
- Educational & Sightseeing Bus Trips
- Billiard room, Shuffleboard and Bocce courts
- Entertainment & Musical Programs
- Quilting, Arts & Crafts
- Wood Shop
- Garden Plots

Services Available for Additional Fee

- Meals (Applies to Cottage & Apartment Residents)
- Housekeeping & Laundry (Applies to Cottage & Apartment Residents)
- Adult Day Services
- Landis At Home (nursing assistants, homemakers & companions)
- Hairdresser/Barber
- Educational & Sightseeing Bus Trips
- Pathways Institute for Lifelong Learning
- Newspapers
- Dry Cleaning Services
- Rehab (Physical/Occupational/Speech Therapies)
- Podiatrist/Ophthalmologist/Audiologist/Dentist
- Medicare Home Health Services/Hospice
- Laboratory Services
- Psychiatric Services



Healthcare is for persons requiring 24-hour care and supervision under the direction of a registered nurse. Healthcare rooms are located within close proximity to several community areas including: dining rooms, activity areas, rehabilitation services, living rooms, gift shop and chapel.

Healthcare offers rehabilitation after surgery or illness and extended care when ongoing assistance is needed. An individualized care plan is prepared for each resident, with input from nursing, social services, pastoral care, life enrichment, dining services and family members.

Residents have access to physical, speech, occupational and aqua therapies as ordered by a physician. Barber and beautician services are available.

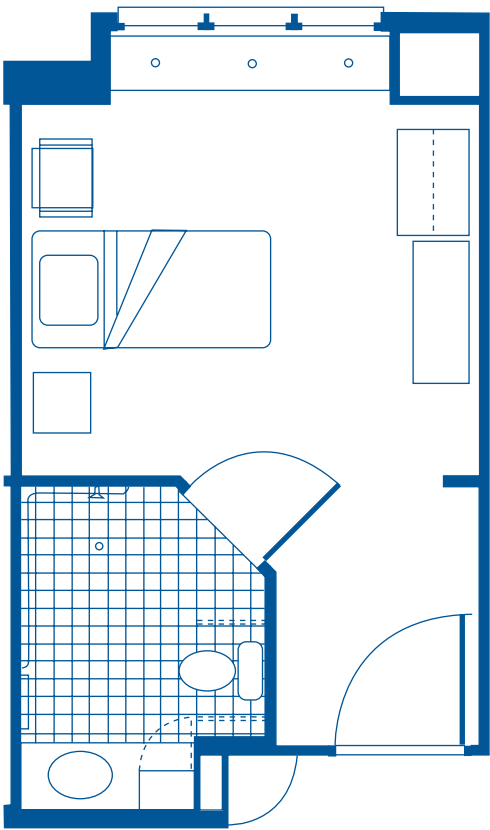
Healthcare for persons with memory loss is offered in Heritage Memory Support.

FEATURES INCLUDED IN THE DAILY FEE

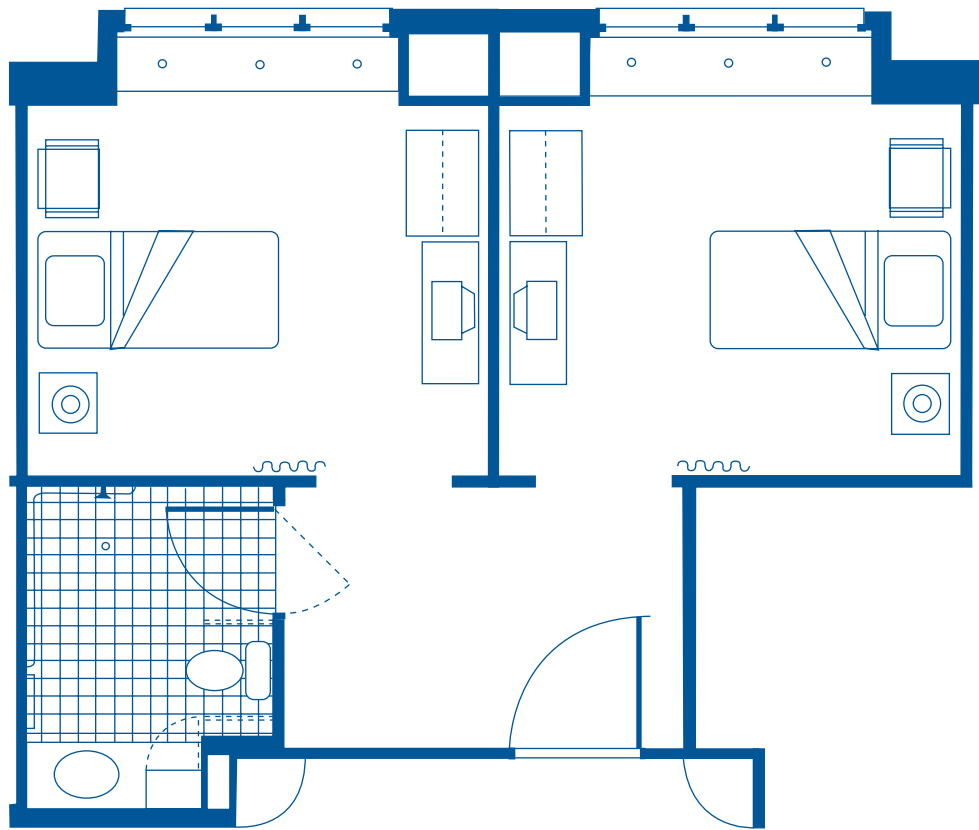
- Private room with private or shared bath
- Nursing Care
- All Meals
- Housekeeping, Laundry & Maintenance services
- Utilities*, including telephone and cable TV service
- Social Services
- Pastoral Care
- Social & Recreational Activities

**Internet connection not included.*

(Floor plans on back)



HEALTHCARE WITH PRIVATE BATH



HEALTHCARE WITH SHARED BATH



Heritage Memory Support provides individual programming, security and nurture for residents with memory loss. Team members in *The Heritage* are specially trained in the care of persons with memory loss.

Common areas are designed to minimize noise and distractions. Each living area includes a country kitchen, dining room and living room. There are smaller family rooms and a large multi-purpose room for group activities and events.

Enclosed courtyards allow residents to enjoy the outdoors and to take part in activities such as picnics, lawn games, gardening and other outdoor events.

The Heritage includes:

Healthcare is located in two living areas, Conestoga House and Lancaster House, each with 11 private rooms and two private rooms with shared bath.

Personal Care offers all private rooms in Lititz House.

Adult Day Services is open weekdays for up to 28 persons living at home.

Memory Loss Support Group, co-sponsored by the Alzheimer's Association, meets monthly.

FEATURES INCLUDED IN THE DAILY FEE

- All Meals
- Housekeeping, Laundry & Maintenance services
- Utilities, including telephone and cable TV service
- Nursing Services
- Social Services
- Pastoral Care
- Social & Recreational Activities



Effective July 2011

Range of Monthly Rates

<u>Cottages</u>	<u>Range of Advance Fees</u>	<u>Single Occupancy</u>	<u>Double Occupancy</u>
1 Bedroom	\$41,000 - \$82,000	\$584 - \$781	\$724 - \$921
2 Bedroom	\$75,000 - \$256,000	\$756 - \$1,485	\$896 - \$1,625

Hybrid Homes

1 Bedroom	\$126,000	\$990	\$1,130
1 Bedroom and Den	\$191,000	\$1,333	\$1,473
2 Bedroom	\$185,000	\$1,367	\$1,507
2 Bedroom and Den	\$225,000	\$1,546	\$1,686

Apartments

Studios	\$40,000 - \$83,000	\$597 - \$827	\$967
1 Bedroom	\$63,000 - \$93,000	\$716 - \$850	\$856 - \$990
1 Bedroom with Den	\$112,000	\$965	\$1,105
2 Bedroom	\$84,000 - \$142,000	\$795 - \$1,141	\$935 - 1,281

Suites

Standard	\$71/Person
Large	\$64 - \$102/Person
Apartment	\$71 - \$115/Person

Range of Daily Rates

Personal Care

Standard	\$154 - \$211/Person
Large	\$158 - \$270/Person
One Bedroom Apartment	\$163 - \$278/Person

Range of Daily Rates

Health Care

Daily Rate
Private Room
\$366/Person

Daily Rate
Private Room with Shared Bath
\$351/Person

(continued on back page)



Heritage Memory Support For Persons with Memory Loss Effective July 2011

Personal Care

Regular

Healthcare Pending

Respite

Range of Daily Rates

\$264/Person

\$271/Person

\$284 - 291/Person

Health Care

Private Room

\$369/Person

Private Room with Shared Bath

\$354/Person

Adult Day Services

Eden West

\$57.00/Day

Eden East

\$64.25/Day

*Landis Homes is not responsible for other sources which may use outdated information.
Current rate information is available at www.landishomes.org.*



Adult Day Services is open weekdays between the hours of 7:30 a.m. and 5:00 p.m. Closed holidays and inclement weather days.

Purpose

- To add meaning and dignity to life through activities and companionship
- To maintain or improve physical and mental functioning
- To offer respite and support to families and care givers
- To provide opportunity to remain in one's home as long as possible

Activities

- Specially trained and caring staff provide meaningful activities that focus on a client's remaining strengths and provide opportunities for success.

Exercise	Recreational Activities	Cooking & Baking
Discussion Groups	Reminiscing	Educational Events
Music	Swimming	
Field Trips	Arts & Crafts	

Eden West

- The Eden West center enriches the quality of life for 38 persons who may benefit from daytime services.

Eden East

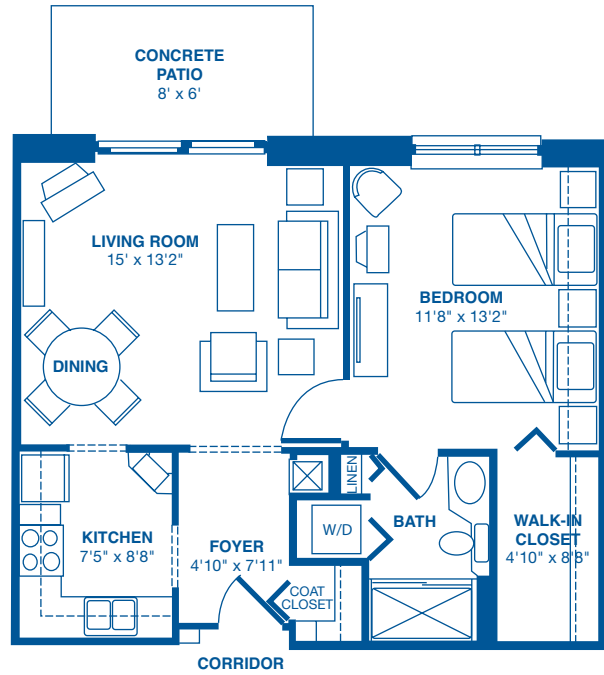
- The Eden East center is designed for the unique needs of 28 persons with memory loss.

For more information: Call (717) 581-3939
or e-mail fhoover@landishomes.org

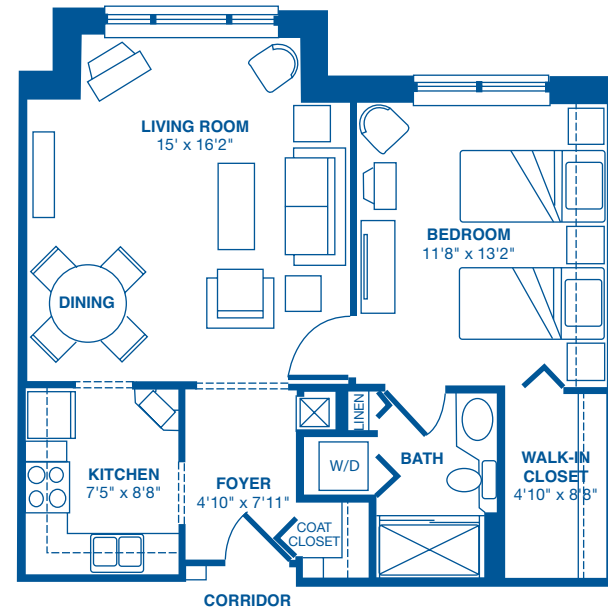
Adult Day Services are jointly sponsored by Landis Homes and Lancaster County Office of Aging and are funded, in part, by contracts with the Lancaster County Office of Aging / Office of Long Term Living, the Pennsylvania Department of Aging and the Lancaster County Office of Mental Health/Mental Retardation.



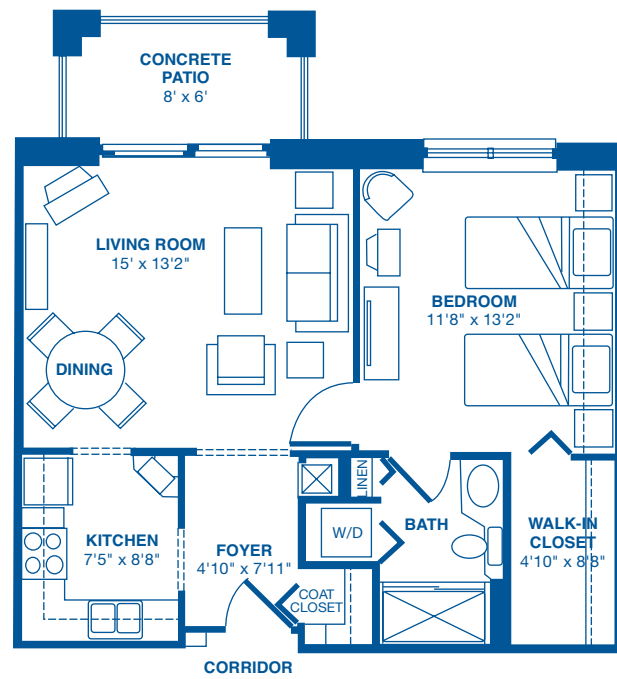
Harvest View Apartments



ONE BEDROOM with Patio
639 Square Feet

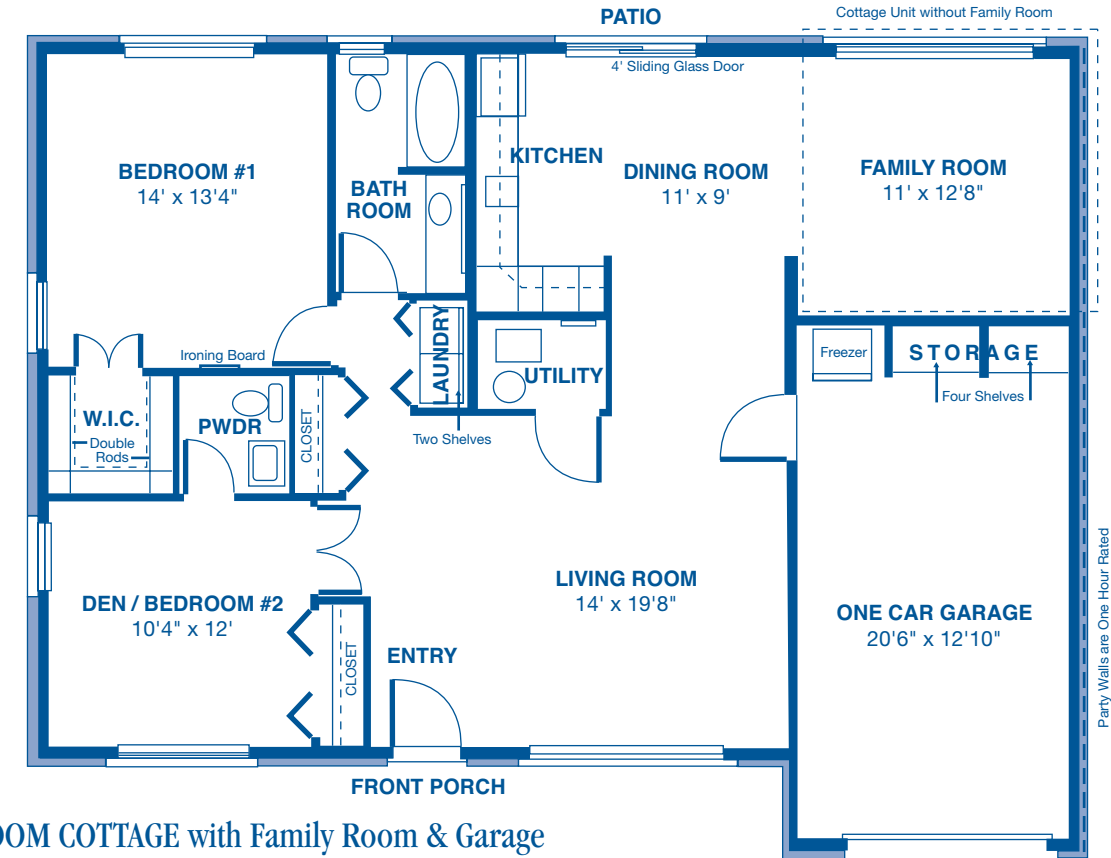


ONE BEDROOM with Bay Window
678 Square Feet

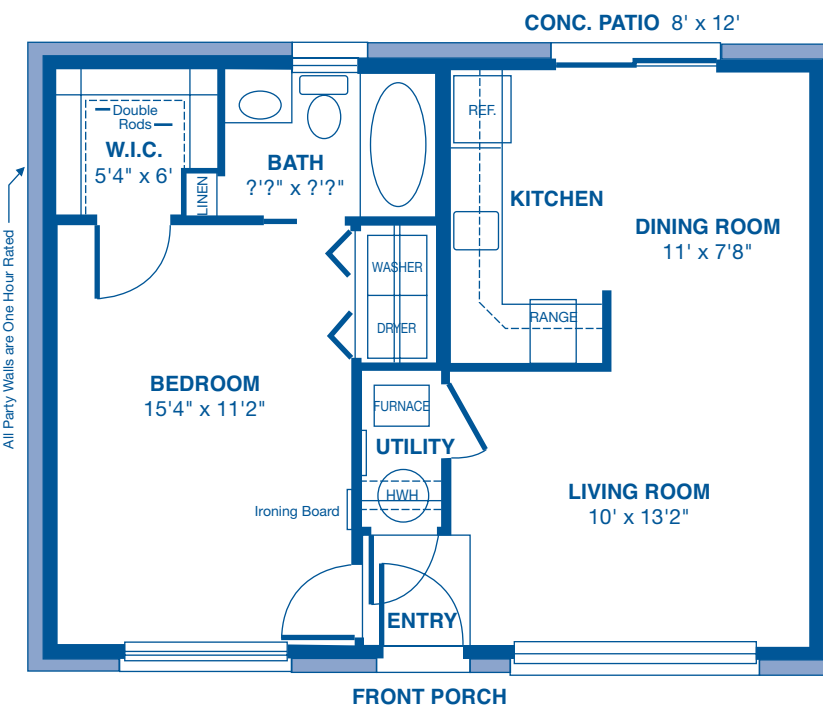


ONE BEDROOM with Balcony
639 Square Feet

Cottages



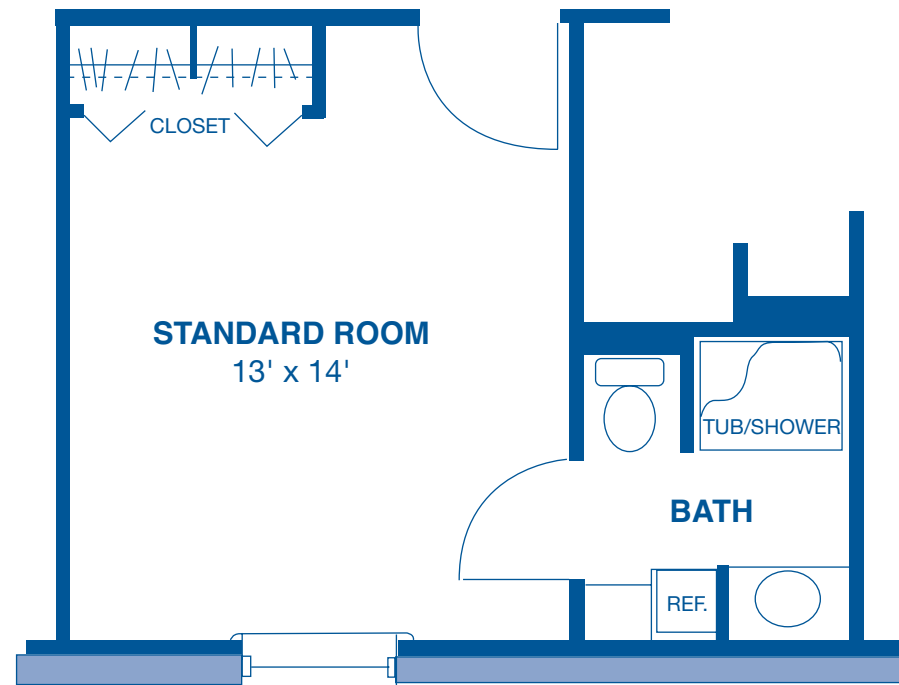
TWO BEDROOM COTTAGE with Family Room & Garage



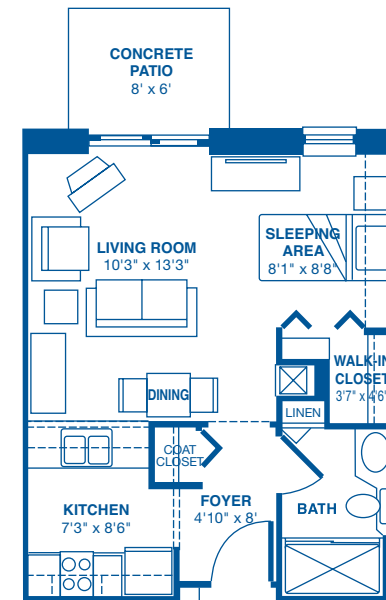
ONE BEDROOM COTTAGE without Garage



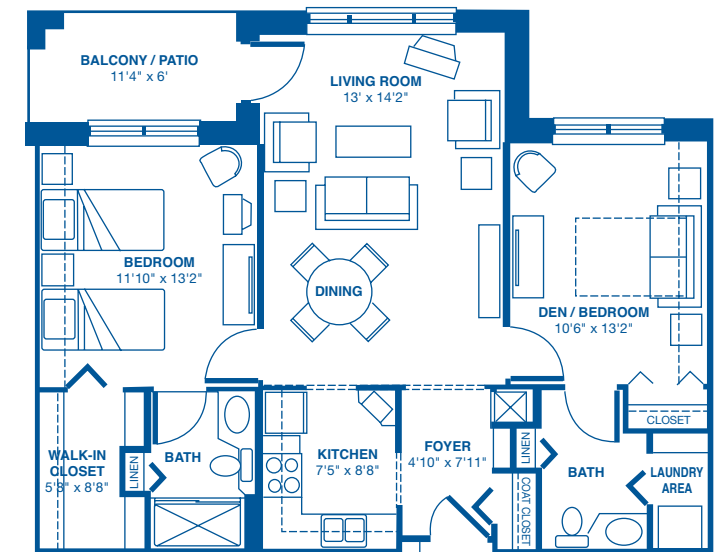
Typical Standard Suite



Harvest View Apartments

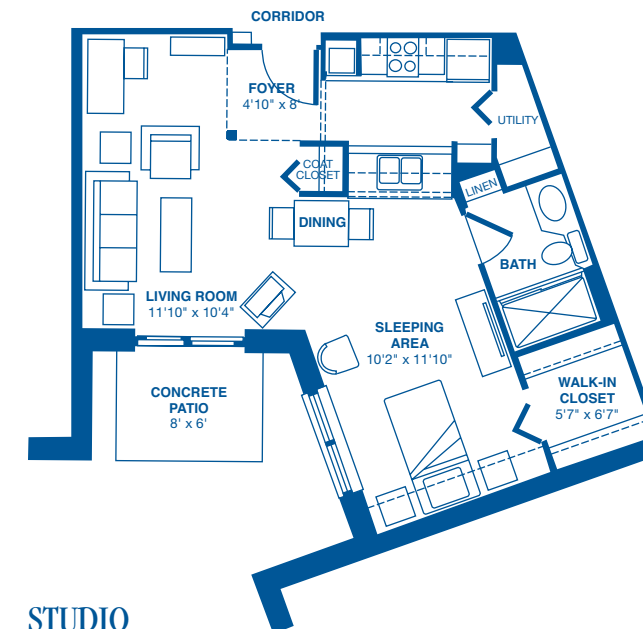
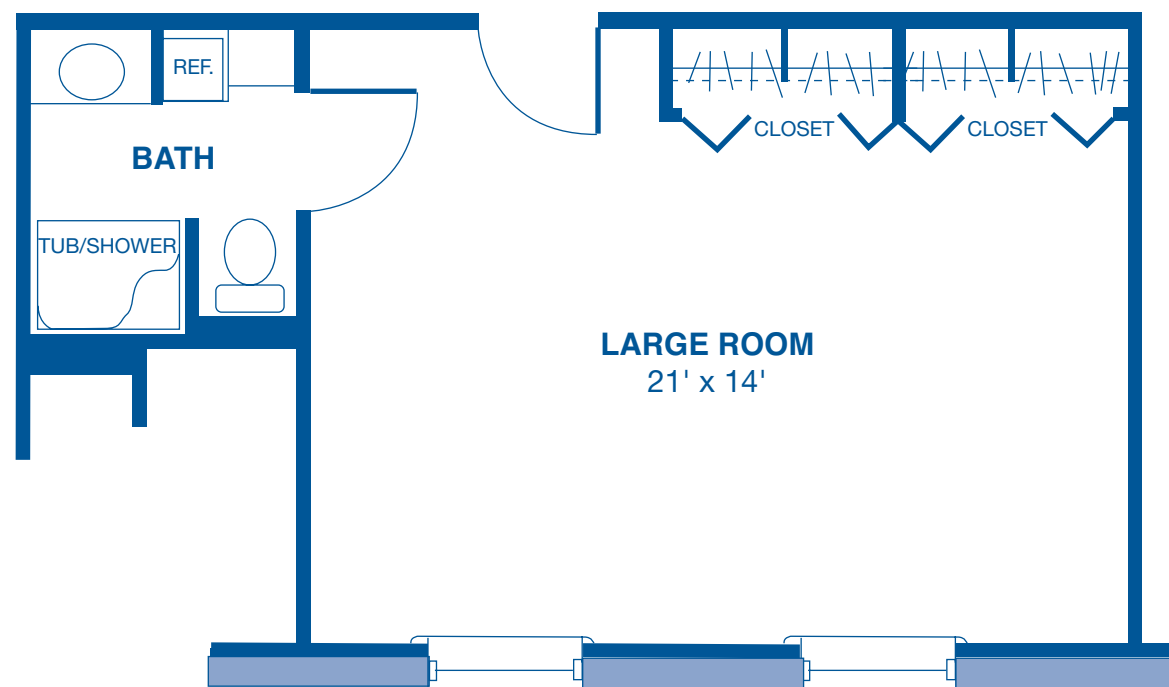


STUDIO
436 Square Feet

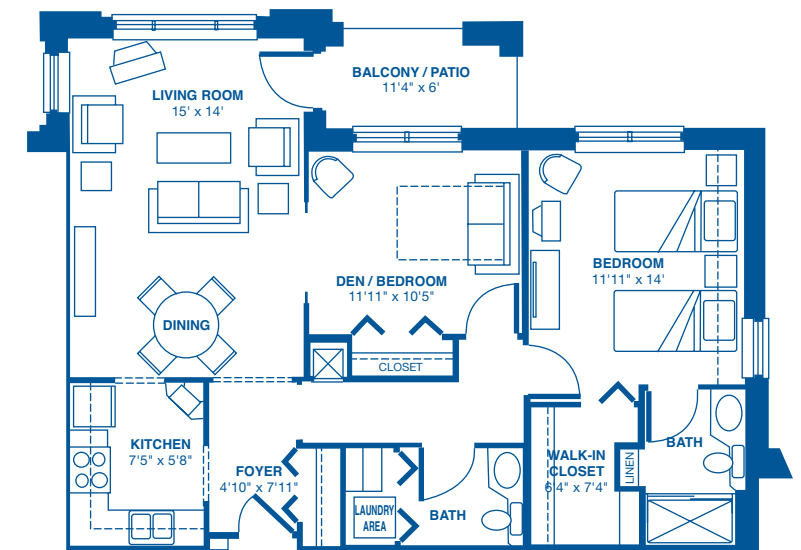


TWO BEDROOM with Balcony or Patio
946 Square Feet

Typical Large Suite



STUDIO
611 Square Feet



TWO BEDROOM with Balcony or Patio
981 Square Feet